

A NOTE FROM THE  
EDITOR

Reefers,

As I reach out to you once again, I hope this note finds you & your tanks in healthy & tip top shape. The months of April & May were very busy and packed with fun filled events for you the members. In April we had our much anticipated Zoo Event at the San Antonio Zoo in which we had a turnout considered to be a huge success. Loved by all and those still young at heart. The event consisted of an after hours tour of the current reef setups & the behind the scenes view of everything needed to keep their setups up to par. In addition to that already mentioned.

The May Meeting was an educational topic given by our very own President Ace Shedd, aka Hobogato. The topic Culturing your own food to feed your reef. Ace went on to expand on the culturing of live phyto and the process of rearing such tiny micro organisms to keep your fish, coral, sponges & other living creatures in your reef tanks.

We also had a guest speaker Glen Hitzfelder who was generous to speak at our meeting on the topic of Captive Breeding Techniques. He shared lots of valuable information with our members going into deep detail about the life cycles of marine fish and the rearing of ornamental & consumable of fish.

Thank You Glen & Ace for a job well done.

Members, I look forward to seeing you at our sponsors stores and or posting on the MAAST forums. Until next time, I will see you soon!

Take Care

-Eve Vialpando  
(aka Pennies2Cents)



May & June POTM Winners— Regric25/Cory Dude

### Acans –What’s not to love?

Corals of the genus Acanasthrea have become very popular in recent years. Their easy maintenance requirements make them excellent corals for almost any reef tank.

They thrive and at the same time add a candy dish like assortment of color to lower regions of the tank often less suitable for other corals.

### Care:

Water flow and lighting can affect the coloration of each acan colony. As with any coral care should be taken to not expose it to a higher light intensity slowly and it is best to place it towards the bottom of the tank and only gradually move it up higher.

Strong water flow can negatively affect acans and a more moderate flow is generally preferred. A delightful aspect of acan care is that they are hermatypic/photosynthetic and while they do not depend on direct feeding they greatly benefit from it. Growth is accelerated in target fed acans. Feeding is easy and while it is true that they mostly prey at night it is not challenging at all to get them to accept food during the day.



**MAY POTM**  
**WINNER:**

**Regric 25**

**ABOUT THE PHOTO**

This is a photograph of an Aussie Acan Lord Coral (*Acanthastrea Lordhowensis*) these are my favorite coral to photograph. There is so much detail and color to capture.

This Acan picture was taken in my Bio Cube 29 that is for the most part stock. I keep the salinity at 1.024, I do weekly 5 gallon water changes and I keep the light on 8 hours a day.

This Acan was shot with my Nikon D60 using a 18-55mm lens with only the actinic light on. The focal length was 55mm, the F-stop was F/36, and the shutter speed was at 13 seconds. In my opinion if you own a DSLR it's always important to learn how to use the "manual mode". This mode will allow you to capture dramatic shadows and lighting that you may not see with your naked eyes. To get a clear up close photo with a slow shutter speed like this one I use a tripod and a wireless remote. Thanks to everyone who voted for my picture.

Regric25.

Cont from Page 1.

Speaking of prey, these are very aggressive corals. Their mesenterial filaments can and will dissolve the tissues of other corals within reach, so please give them plenty of space to avoid contact with other corals.

Once new heads have grown they can be fragged using a dremel tool or similar. If allowed to spread only around it's own skeleton they tend to grow into somewhat of a ball shape. For that reason it may be advantageous to affix the new frag to a rock or similar object to allow the acan to grow into more of a flattened shape. According to Peru, *Acanthastrea* react better to higher levels of magnesium (1250-1350 ppm).

Special Considerations:

Acquiring acans can be quite expensive if you are in the market for a big colony. In fact authors such as Eric Borneman and Anthony Calfo even raise some questions in regards to potential price fixing. There are also ethical and legal concerns when acans are offered for sale that were collected in places other than Indonesia where the collection of acans is legal, CITES regulated and plentiful. The Ministry of Trade in Japan for example considers the sale of corals (including acans) for ornamental purposes illegal.

Since they are such active feeders and relatively easy to propagate you should be able to acquire small colonies or frags very economically and grow them into larger colonies in your tank.

I was surprised to read that many acans sold as acans are not acans at all. They are often confused for corals of the Faviidae family or for their *Blastomussa* and *Micromussa* cousins. True *Acanthastrea* have exceptionally large, pointy septa (skeletal "teeth") that help distinguish them from other corals.



**June POTM Winner:**

**Cory Dude**

### **ABOUT THE PHOTO**

This is Mannie our 2 year old mandarin. She's housed in a 90 gallon sps dominant tank with about 90 lbs of live rock. I've had this live rock in a reef tank of some type for the last 12 years. So it is very mature rock that is populated by large numbers of isopods, copepods, and lots of other micro fauna.

Mannie was very thin and emaciated when I purchased her. But, she fattened up very quickly within weeks of being introduced to our tank. With her beautiful colors and interesting behavior, she quickly became my wife's favorite fish.

This particular shot was a lucky picture. She took an interest in a stylophora one day, and I just so happened to have had the camera sitting nearby. The shot was taken with a Nikon D5000 with the standard 18-55mm kit lens. Thanks to all who voted for my picture .

Cory Dude

Cont. From page 2.

Luckily most of us will never see the skeleton of acans and few would be willing to pursue identification if it means killing the coral.

So what's not to love about acans? They are gorgeous, easy to care for and multiply readily... until one day you may encounter the treaded acan melt. When out of nowhere your previously thriving colony is suddenly melting away.

I was unable to find a clear answer on what causes it and what the best remedy is but based on my research the following treatments showed improvement on some specimens.

- Interceptor – the idea is that some kind of microscopic predators is eating your acans
- Iodine Dips – in case the problem is some kind of bacterial infection
- Raising Magnesium levels

Sources:

<http://reefkeeping.com/issues/2005-08/ebac/index.php>

<http://www.thesea.org/acanthastrea/a...strea-care.htm>

<http://reefcentral.com/forums/showth...1752288&page=2>

<http://sites.google.com/a/asira.org/www2/acanthastrea>

Written By: Karin  
(Europhyllia)

# EYE ON IT

## Species Spotlight

### ACANTHASTREA

*Acanthastrea* generally have large corallites (8-15mm) with small teeth or lobes on their septa, as well as well-developed columellae. In the wild, they're found mostly in shallow water to about 20m, often in protected areas like lagoons, forming colonies up to several meters across.



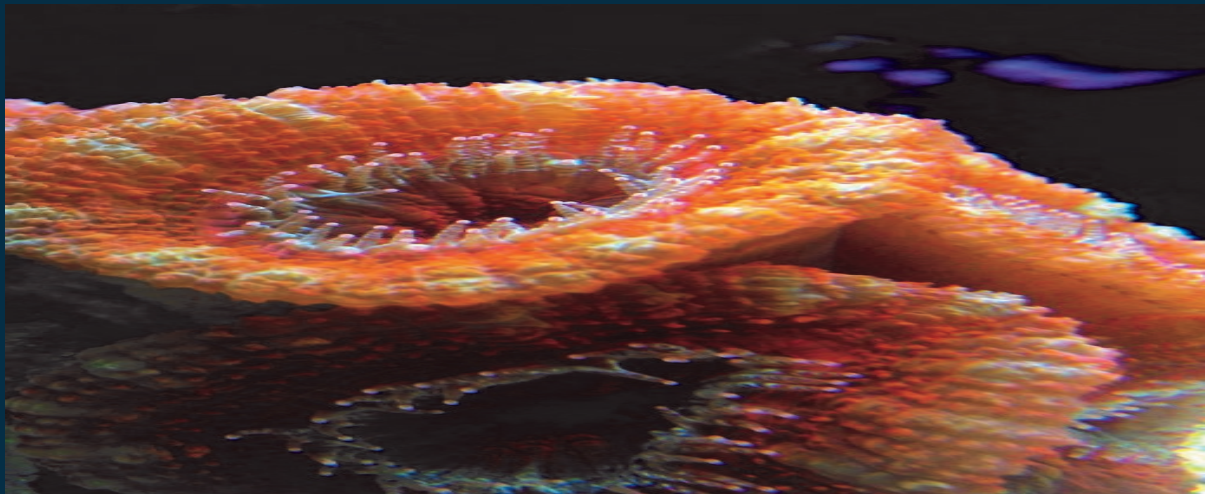
In the reef aquarium, *Acanthastrea* are incredibly hardy and fast growing, tolerating a wide variety of conditions, including both low and moderate lighting and moderate water currents. They make ideal candidates for fragging at home, since they have such distinct corallites (less risk of collateral damage!), amazing adaptability to lighting conditions, and rapid growth rates.

Be aware that *Acanthastrea* are voracious nocturnal predators and competitively extrude mesenterial filaments and digest organisms within reach, so be careful with placement and distance between colonies. Target feed them minced meaty foods and zooplankton for best growth and frag recovery time.



## Upcoming Events:

<u>June 26, 2010</u>	<u>July 23-25, 2010</u>	<u>August 2010</u>	<u>September 2010</u>
Austin Tank Tour	Port Aransas Collection		
2-6 pm	Trip	TBA	TBA
Austin, Tx	Speakers & Times TBA		
	Port Aransas, Tx		



## This Month's Aquaria Q&A ...

### Question:

What are some examples of easy-to-keep tank mates for my seahorse nano-aquarium?

### Answer:

As far as fish go, the main key is docile behavior. Do remember, there are no guarantees and all fish have personalities. Some examples would be fire-fish, small gobies, cardinal fish, and if you are prepared for the maintenance, dragonets. As far as invertebrate life is concerned, typical ornamental shrimp (Scarlet Skunk and Peppermint shrimp) and snails are a safe bet. Crabs are, in my opinion, at your own risk. As far as coral is concerned, soft corals that can tolerate lower light environments are the way to go -- mushrooms and zoanthids work well here.



Justin Norman (aka) Corruption

# BECOME A CHARTER MEMBER TODAY

## Membership

Dues are \$25 for the calendar year. These dues quickly pay for themselves by the discounts given that many local stores honor to MAAST members.

We are trying to make our club better, bringing more educational topics, more door prizes and raffle items, and guest speakers. We also have the routine maintenance items like the website, food for meetings, membership dues to national marine organizations, and print/publication fee's. Membership dues allow our club to keep afloat and make all of this possible. As always, the website portion of the club will remain free.

Why collect dues?

1. Keeps MAAST afloat.
2. Funds club meetings so host does not have to pay for all out of pocket.
3. Allows for an image gallery on MAAST website.
4. Extra funds go into pool for "expert" speakers at the meetings.
5. Higher quality raffles, higher quality meetings, higher quality club!
6. Eligibility to run for a club office or be appointed to a committee.
7. Eligibility to VOTE!
8. Discounts at participating LFS's and online vendors.
9. A membership card
10. A voice to represent aquarists' interest.

For more information concerning Charter status, please read our By-Laws.

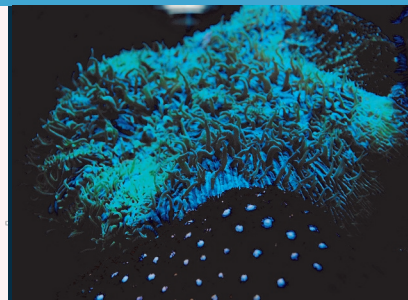
The membership dues are \$25.00. Payment can be made either at the meetings, online via PayPal, or with a check mailed to our PO Box below

PayPal fee's can be sent to [treasurer@maast.org](mailto:treasurer@maast.org)

or via snail mail to:  
MAAST  
P. O. Box 780582  
San Antonio, TX 78278

Please include name, sign-in name, e-mail, home address, and phone!

*Thanks for everyones help and support with this great organization!*



### PHOTO CREDITS

P1. POTM Winners –  
May Regric25

POTM Winner  
June Cory Dude

P2. Acan-Regric

P3 - Acan- Cory Dude

P4 - Acan- Littlereef.

P4 Pink Chalice  
Littlereef

P5 XL Plate Coral w/  
Zoas-BStreep

### Optimum Levels

pH	8.1 - 8.3
Specific Gravity	1.026
Alkalinity	8 dKH
Calcium	450 ppm
Magnesium	1350 ppm
Nitrate	0
Phosphate	0 - .01 ppm